

Appendix A-3
Alternative Alignments



LEGEND	
	AT-GRADE SEGMENT
	ELEVATED SEGMENT

FIGURE A-1	
ALTERNATIVE	2

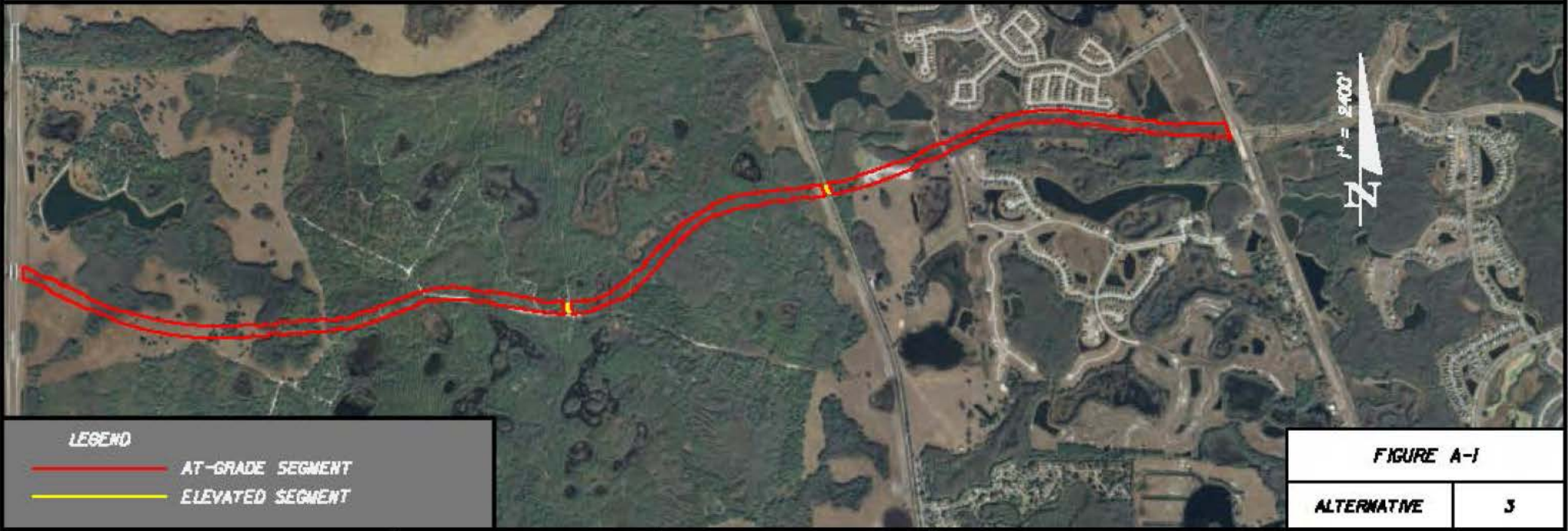
8888 EAST FOREST AVENUE, TAMPA, FLORIDA 33611
 (813) 988-8888 THOMAS J. MONTGOMERY, P.E., DR. ENGINEER

NV5, INC.

PASCO COUNTY

RIDGE ROAD EXTENSION

ALIGNMENT



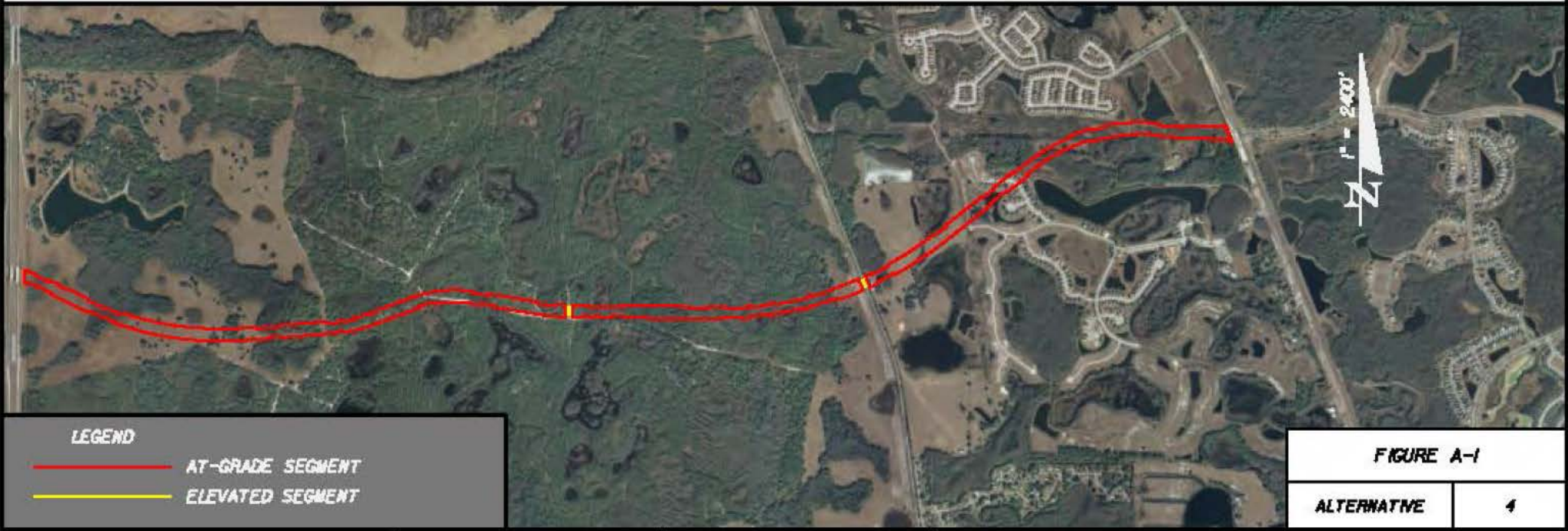
LEGEND

- AT-GRADE SEGMENT
- ELEVATED SEGMENT

FIGURE A-1

ALTERNATIVE 3

ALIGNMENT



LEGEND

- AT-GRADE SEGMENT
- ELEVATED SEGMENT

FIGURE A-1

ALTERNATIVE 4

ALIGNMENT




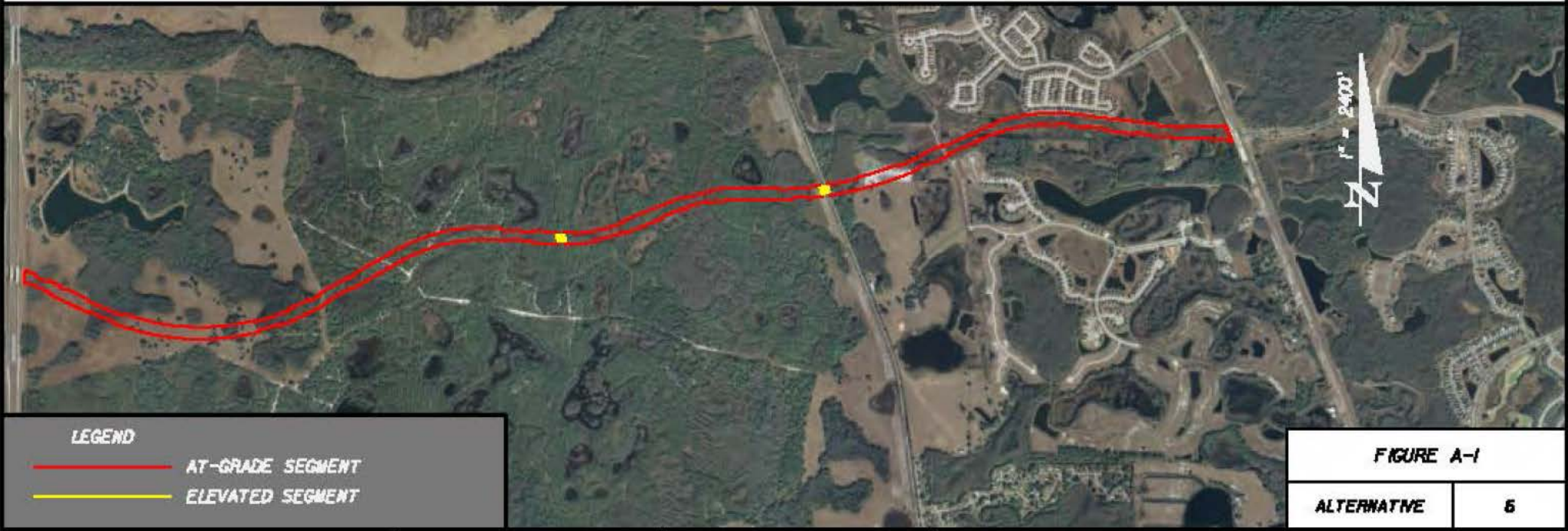
LEGEND	
	AT-GRADE SEGMENT
	ELEVATED SEGMENT

FIGURE A-1	
ALTERNATIVE	5

<p>5800 EAST FOREST AVENUE, TAMPA, FLORIDA 33611 (813) 988-1100 TERRY J. ROYBROUGH, P.E. NO. 58288</p>	NV5, INC.	PASCO COUNTY	RIDGE ROAD EXTENSION	ALIGNMENT
---	-----------	--------------	----------------------	-----------





LEGEND	
	AT-GRADE SEGMENT
	ELEVATED SEGMENT

FIGURE A-1	
ALTERNATIVE	6

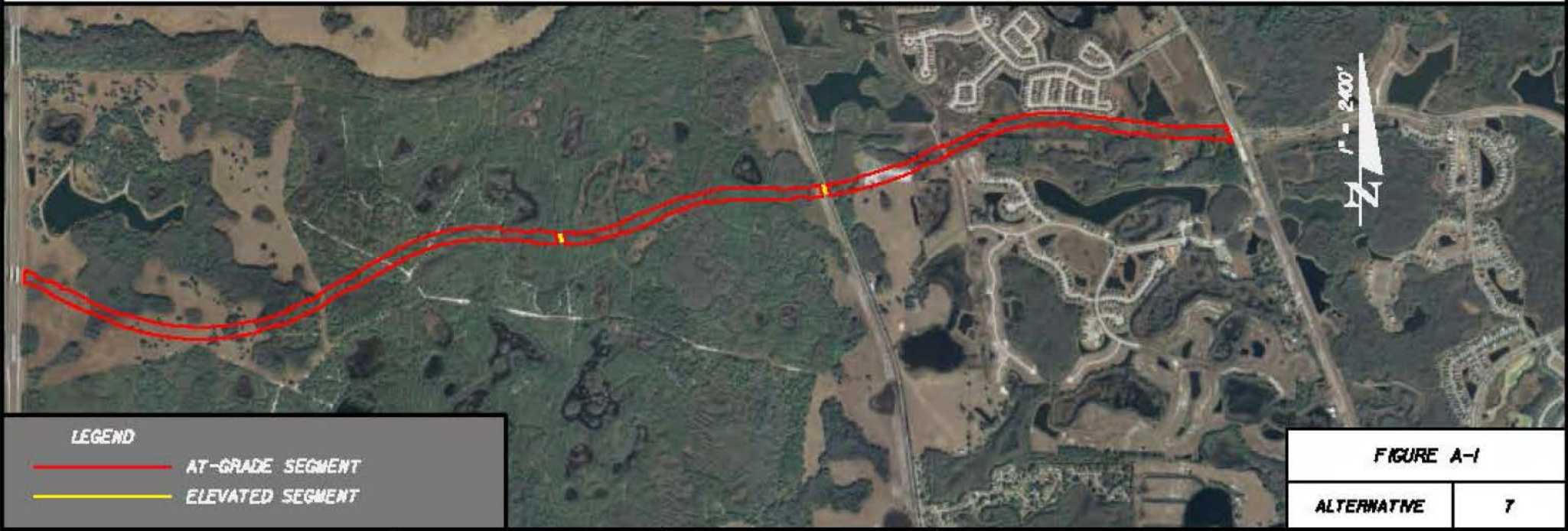
5000 EAST FOREST AVENUE, TAMPA, FLORIDA 33610
 (813) 988-1100 TERRY J. ROYBROUGH, P.E., MD, SEWER

NV5, INC.

PASCO COUNTY

RIDGE ROAD EXTENSION

ALIGNMENT





LEGEND	
	AT-GRADE SEGMENT
	ELEVATED SEGMENT

FIGURE A-1	
ALTERNATIVE	7

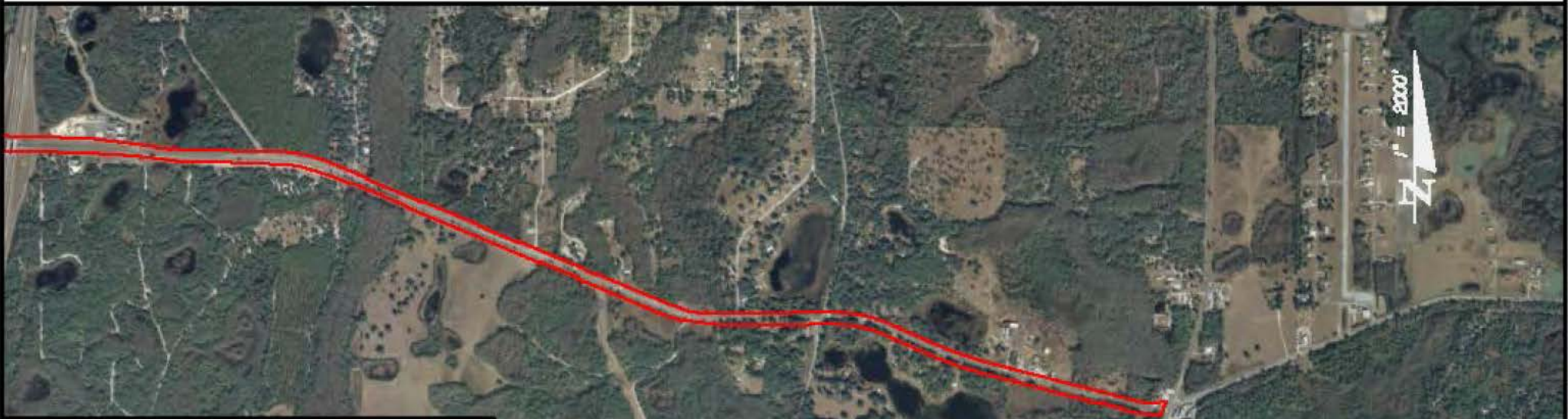
6880 EAST FOREST AVENUE, TAMPA, FLORIDA 33611
 (813) 988-1100 TERRY J. ROYBROUGH, P.E., MD, SEWER

NV5, INC.

PASCO COUNTY

RIDGE ROAD EXTENSION

ALIGNMENT



LEGEND

- AT-GRADE SEGMENT
- ELEVATED SEGMENT

FIGURE A-1

ALTERNATIVE 8

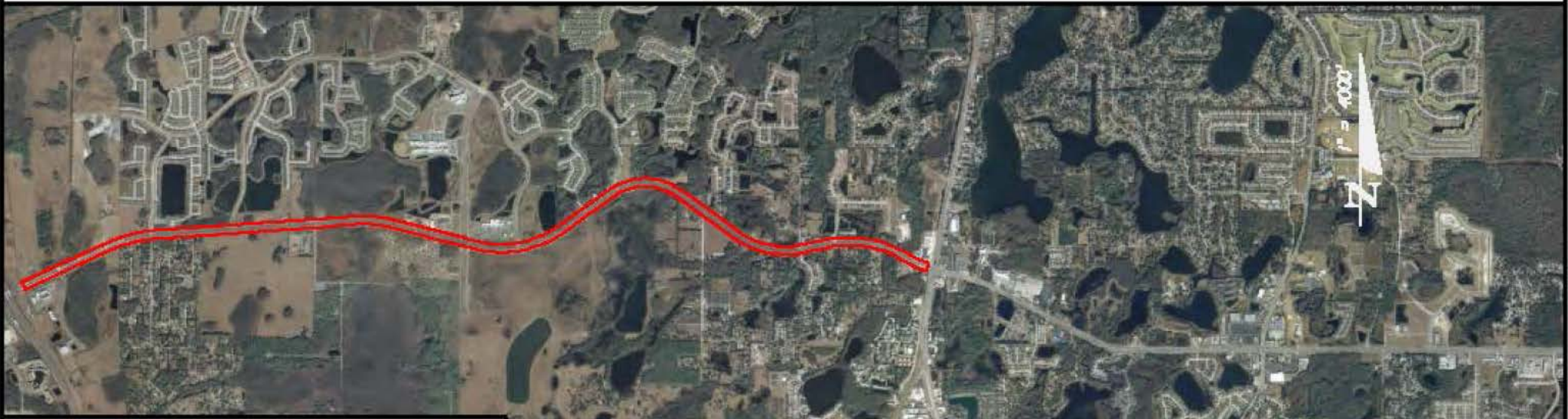
8888 EAST FOREST AVENUE, TAMPA, FLORIDA 33611
(813) 988-8888 THOMAS J. ROYCE, P.E., M.S. 33622

NV5, INC.

PASCO COUNTY

RIDGE ROAD EXTENSION

ALIGNMENT

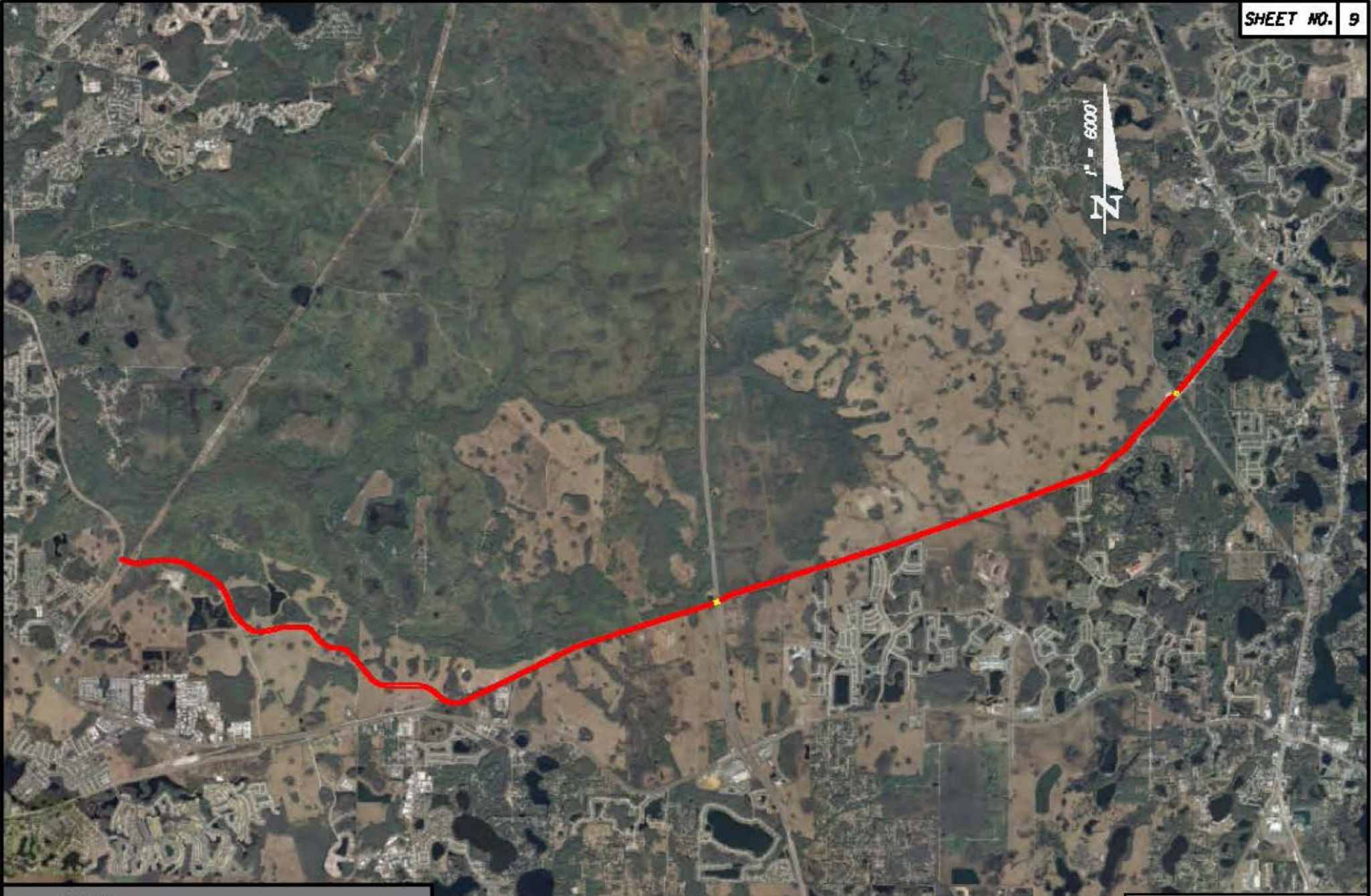


LEGEND

- AT-GRADE SEGMENT
- ELEVATED SEGMENT

FIGURE A-1

ALTERNATIVE 9



LEGEND

- AT-GRADE SEGMENT
- ELEVATED SEGMENT

FIGURE A-1

ALTERNATIVE	ID
--------------------	-----------

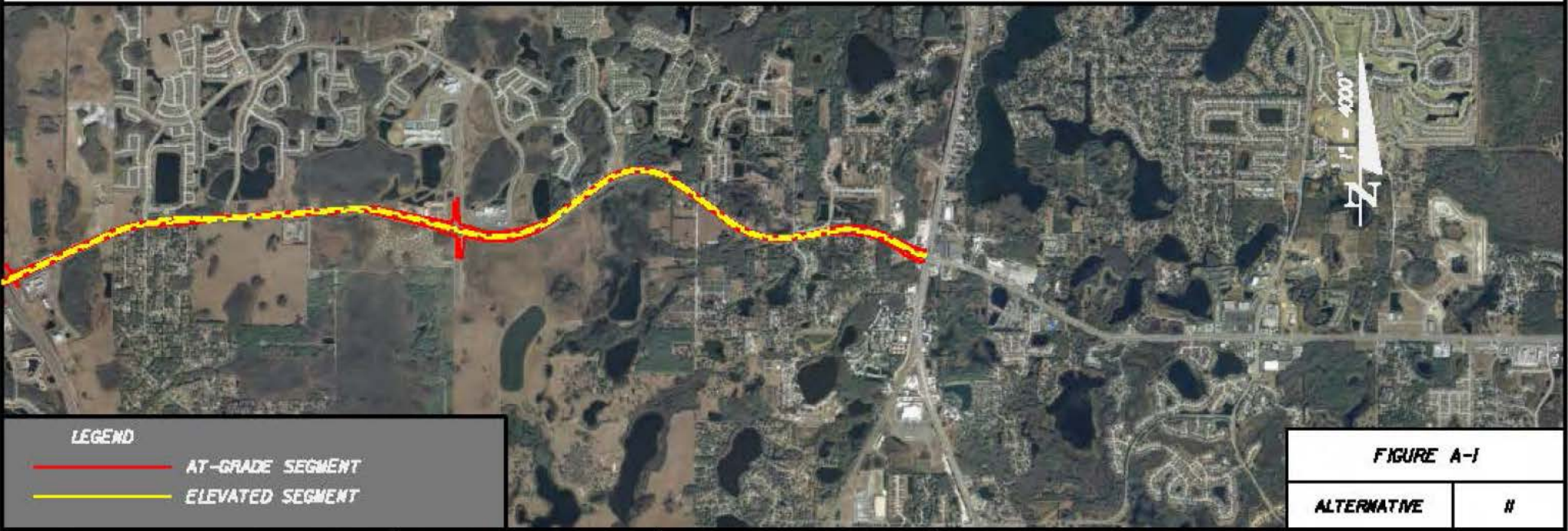
8888 EAST FORNEY AVENUE, TAMPA, FLORIDA 33617
 (813) 988-8888 THOMAS J. ROYBARK, P.E., M.S. 33622

NV5, INC.

PASCO COUNTY

RIDGE ROAD EXTENSION

ALIGNMENT



LEGEND

- AT-GRADE SEGMENT
- - - ELEVATED SEGMENT

FIGURE A-1

ALTERNATIVE	#
--------------------	----------

8888 EAST FOREST AVENUE, TAMPA, FLORIDA 33617
 (813) 988-8888 THOMAS J. ROYBROUGH, P.E., M.D. SINCER

NV5, INC.

PASCO COUNTY

RIDGE ROAD EXTENSION

ALIGNMENT



LEGEND

- AT-GRADE SEGMENT
- ELEVATED SEGMENT

FIGURE A-1

ALTERNATIVE 12

ALIGNMENT

8888 EAST FOREST AVENUE, TAMPA, FLORIDA 33616
(813) 988-8888 THOMAS J. ROYBY, P.E., PE, SDC


NV5, INC.

PASCO COUNTY

RIDGE ROAD EXTENSION



LEGEND

 AT-GRADE SEGMENT


 ELEVATED SEGMENT

FIGURE A-1	
ALTERNATIVE	13





LEGEND	
	AT-GRADE SEGMENT
	ELEVATED SEGMENT

FIGURE A-1	
ALTERNATIVE	14

6900 EAST FOWLER AVENUE, TAMPA, FLORIDA 33607
 CO# 15083 THOMAS J. BONTROICH, P.E. NO. 35008

NV5, INC.

PASCO COUNTY

RIDGE ROAD EXTENSION

ALIGNMENT



LEGEND

- AT-GRADE SEGMENT
- ELEVATED SEGMENT

FIGURE A-1

ALTERNATIVE 15

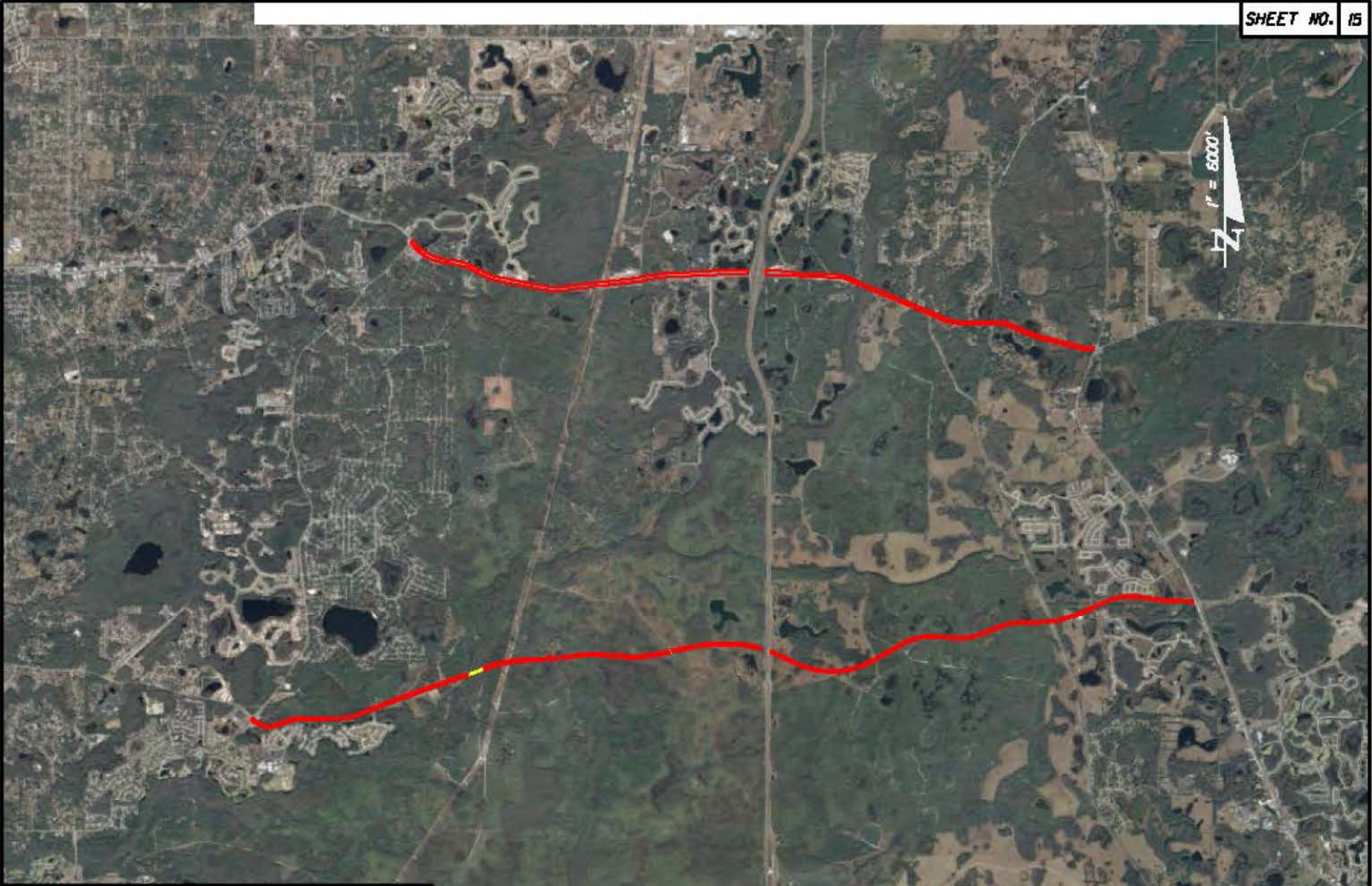
6900 EAST FOWLER AVENUE, TAMPA, FLORIDA 33607
CORA 15083 THOMAS J. BOWEN, P.E. NO. 35008

NV5, INC.

PASCO COUNTY

RIDGE ROAD EXTENSION

ALIGNMENT



LEGEND

- AT-GRADE SEGMENT
- ELEVATED SEGMENT

FIGURE A-1

ALTERNATIVE #5

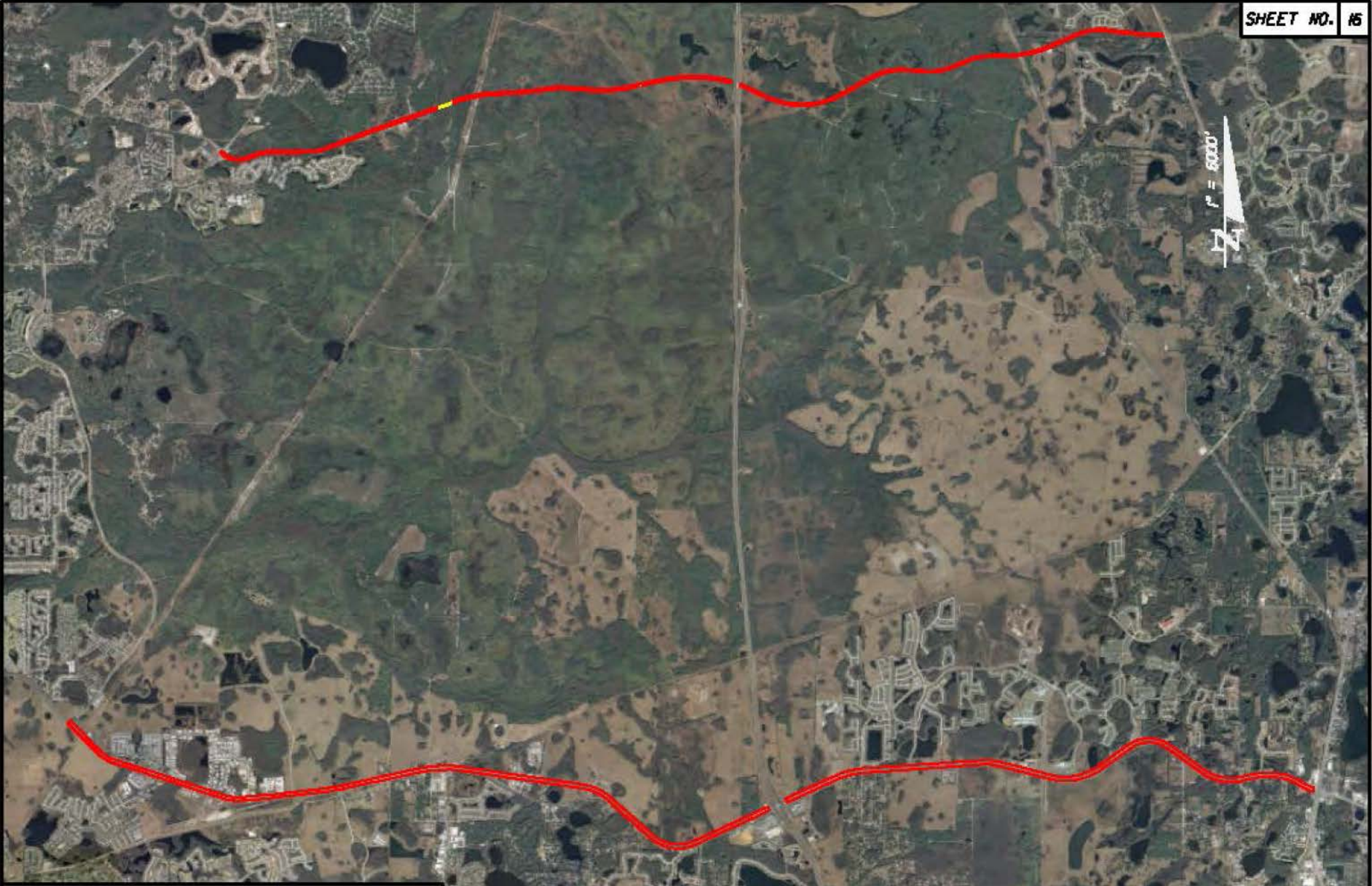
8888 EAST FOREST AVENUE, TAMPA, FLORIDA 33610
LEAD ARCHITECT THOMAS J. ROYCE/STANTEC, P.E. DR. 33002

NV5, INC.

PASCO COUNTY

RIDGE ROAD EXTENSION

ALIGNMENT



1" = 6000'

LEGEND	
	AT-GRADE SEGMENT
	ELEVATED SEGMENT

FIGURE A-1	
ALTERNATIVE	17

6800 EAST FOREST AVENUE, TAMPA, FLORIDA 33607
 (813) 962-2000 THOMAS J. ROYBARKOV, P.E., M.S. 33000

NV5, INC.

PASCO COUNTY

RIDGE ROAD EXTENSION

ALIGNMENT